

Count with confidence, Count with EVE HT FL!



*EVE*TM HT FL

High-throughput **Fluorescence Cell Counter**

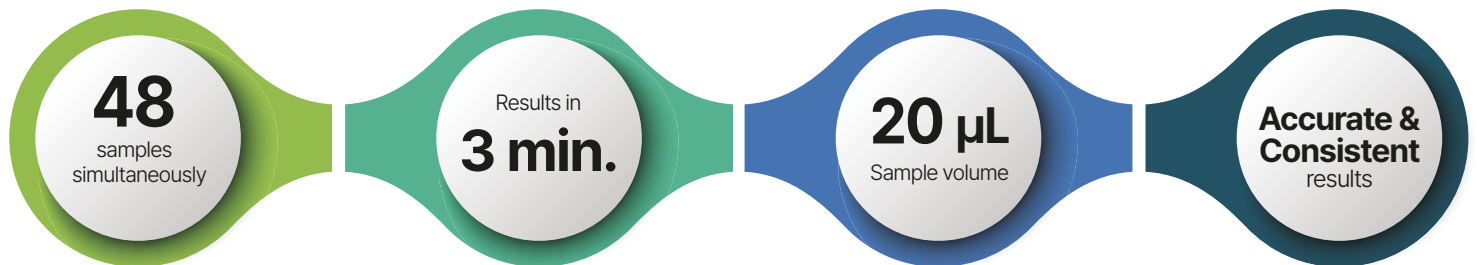
- Primary Cells
- PBMCs
- Stem Cells
- Cell Lines

Introduction

EVE™ HT FL is a high-throughput automated fluorescence cell counter equipped with **bright field** and **dual fluorescence channels (AO/DAPI)**. In just **3 minutes**, up to **48 samples** can be counted and analyzed.

EVE™ HT FL delivers precise and accurate results, making it the best option for both cell lines and primary cell counting in a variety of applications.

Features



Level Up Your Productivity

In just **3 minutes**, up to **48 samples** can be counted simultaneously.

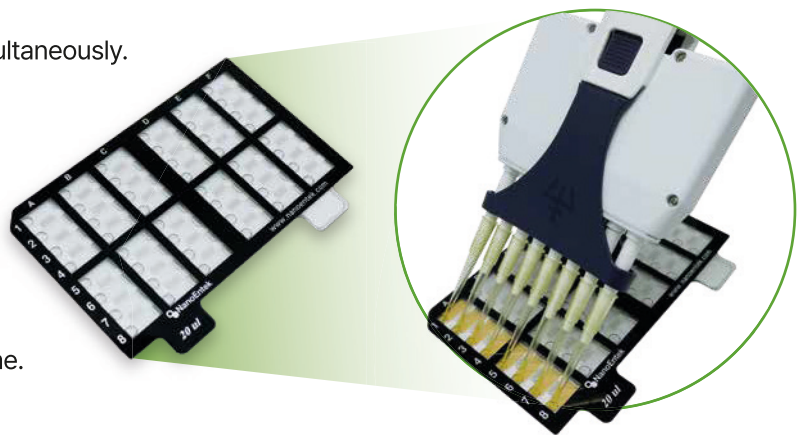
Don't wait! Count your samples in 3 minutes.

Leading to substantial time saving by eliminating the need for frequent reloading and waiting periods.

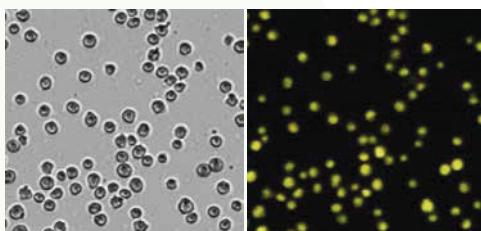
Small Sample Volume

EVE™ HT FL only needs **20 µL** of your valuable samples.

Save your cells for more measurements or better outcome.

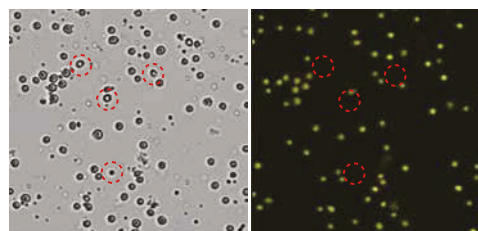


Dual fluorescence for accurate measurements of primary cells or PBMCs



Bright field Image

AO stained cells



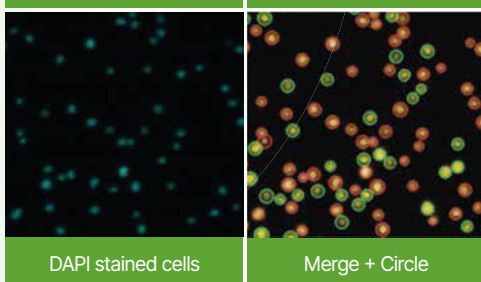
Bright field Image

Total cells
(AO stained cells)

Counting PBMCs ONLY!

PBMCs are often mixed with RBCs or platelets. Use EVE HT FL to count only nucleated cells such as PBMCs.

Fluorescence based counting is more accurate than traditional Trypan Blue based counting.



DAPI stained cells

Merge + Circle

Diverse Cell Counting Applications

Primary Cells

PBMCs

Cell Lines

Stem Cells

Hepatocytes

Leukocytes

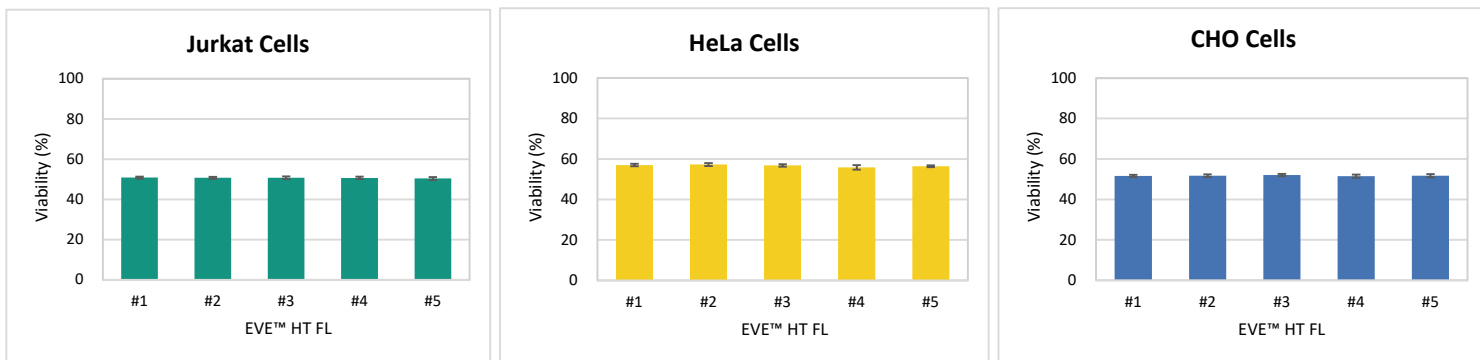
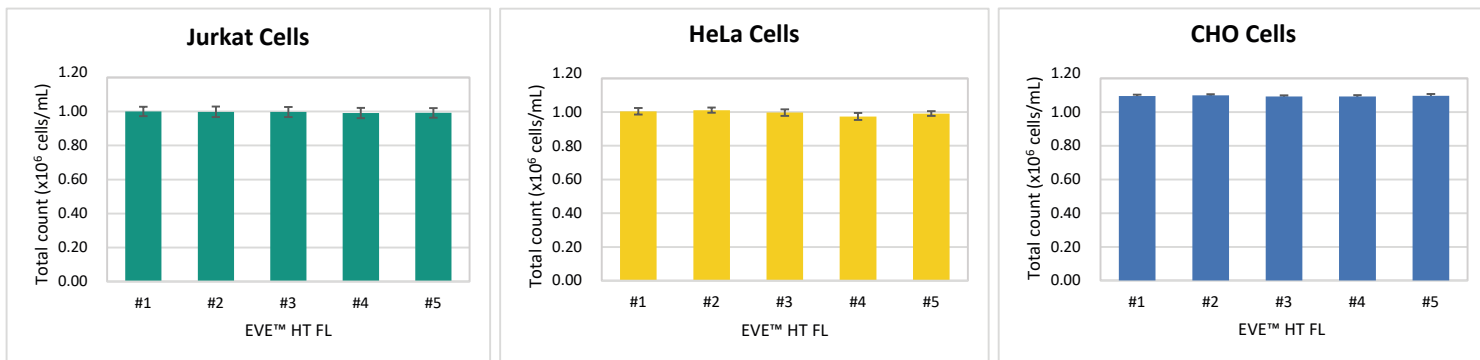
Splenocytes

Adipocytes

Accurate and Precise Results

Instrument-to-instrument Variability with Cell Lines

5 EVE™ HT FL instruments were put to the test using three different cell line samples (Jurkat, HeLa, and CHO) to compare their differences. The results below show very low instrument-to-instrument variability.

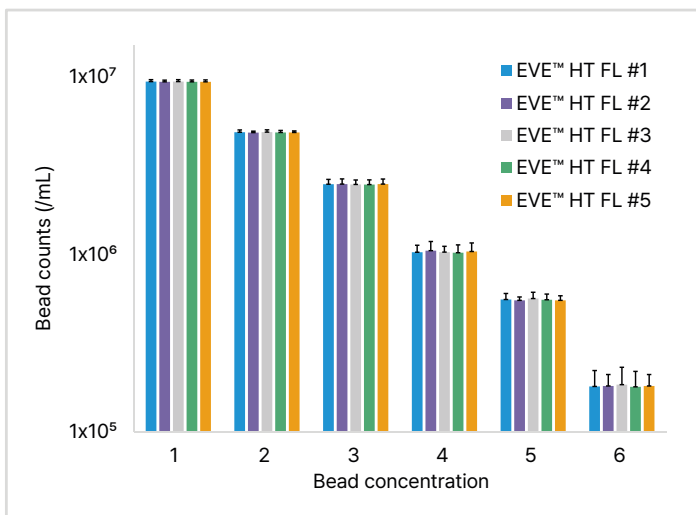


Jurkat	Total count (CV)	Viability (CV)	HeLa	Total count (CV)	Viability (CV)	CHO	Total count (CV)	Viability (CV)
Instrument to instrument	0.44%	0.21%	Instrument to instrument	1.14%	0.91%	Instrument to instrument	0.24%	0.37%
Plate to plate	2.77%	0.99%	Plate to plate	1.45%	0.85%	Plate to plate	0.58%	1.07%
Whole result	5.70%	4.38%	Whole result	5.29%	3.73%	Whole result	5.33%	4.28%

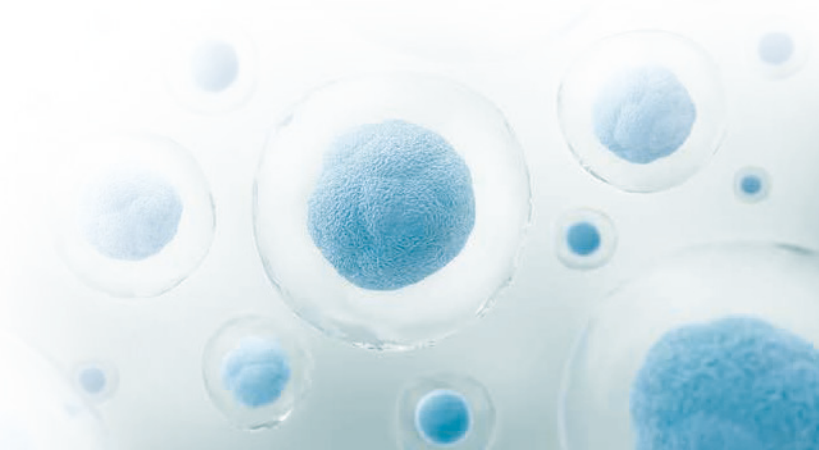
*Whole result: CV value was calculated by combining a total of 400 results measured 16 times each on 5 instruments and 5 plates.

Instrument-to-instrument Variability with Beads

5 EVE™ HT FL were used to measure fluorescent reference beads(for AO channel) at 6 different concentrations. The results below show very little instrument-to-instrument variability.

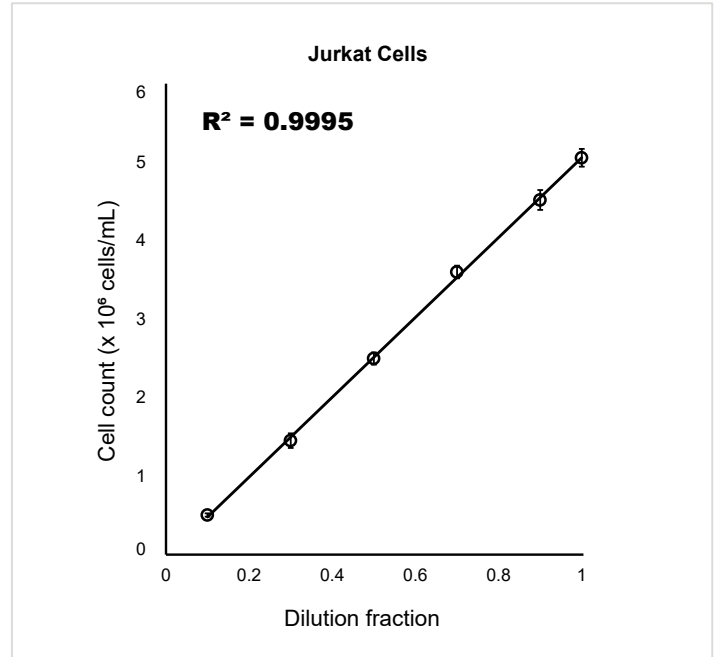
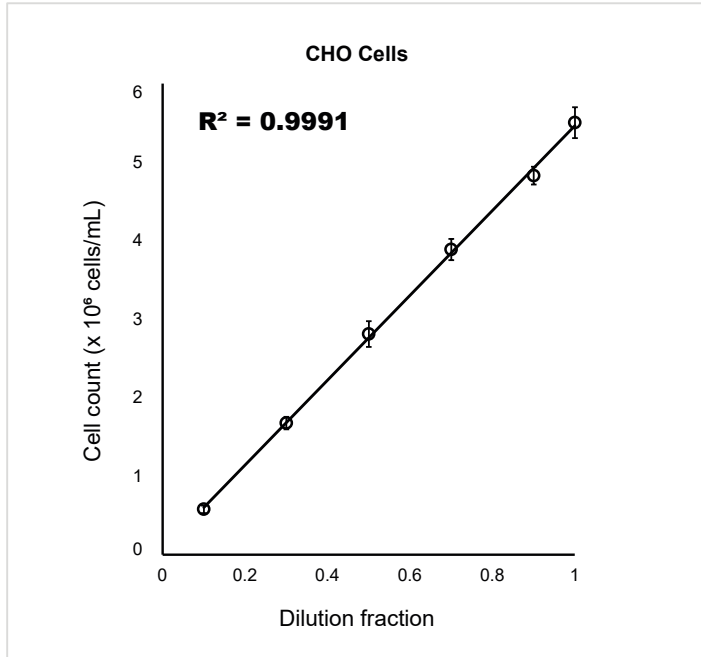


	Bead 1	Bead 2	Bead 3	Bead 4	Bead 5	Bead 6
Instrument to instrument (CV)	0.17 %	0.28 %	0.28 %	1.02 %	0.98 %	1.04 %



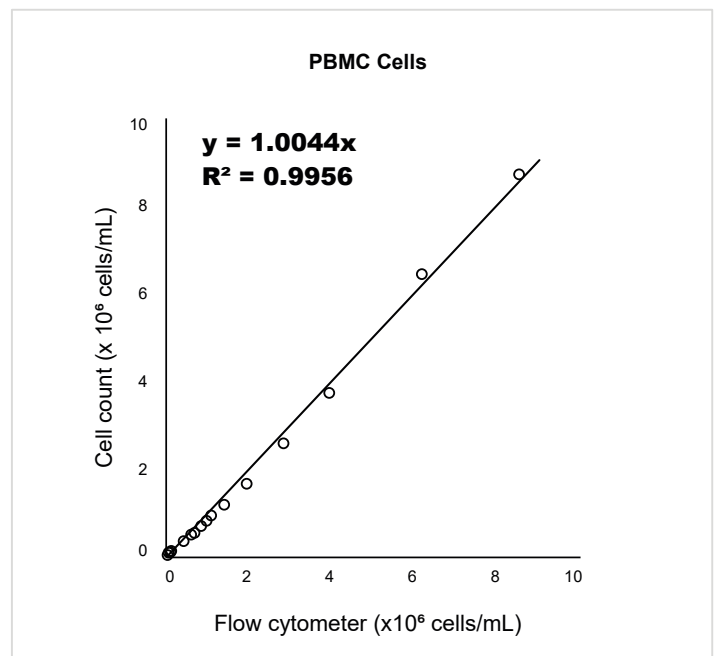
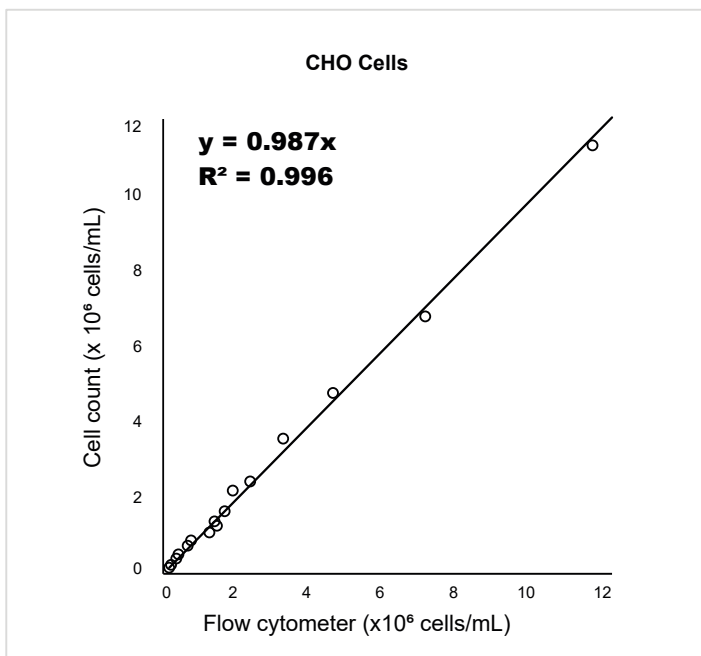
Excellent Linearity Across Wide Range

Following ISO standard for cell counting, we evaluated linearity of EVE™ HT FL using 2 cell lines (CHO cells and Jurkat cells). The following results demonstrate outstanding linearity.



High Correlation Between EVE™ HT FL and a Flow Cytometer

Cell samples were measured using EVE™ HT FL and a flow cytometer. For both CHO cells and PBMCs, total cell counts measured by EVE™ HT FL were highly correlated with those measured by a flow cytometer.





Scan me

Ordering Information

Cat. No	Product	Contents
Device and Accessories		
EVE HT FL	High-Throughput Fluorescence Cell counter	Main device, Desktop, Monitor, Multi pipette
EHPP-001	Preparation Plate	Preparation Plate, 1 plate
Kit and Consumables		
EVFL-020	EVE HT FL Counting Kit	960 tests / kit Counting plate (48 channels × 20 plates) Mixing well plate (96 wells × 10 plates) Reservoir (5 pcs × 4 packs)
EVAD-960	AO/DAPI Staining Solution	20 mL × 2 bottles Acridine orange (AO) & 4',6'-diamidino-2-phenylindole (DAPI) stain
EVTB-960	Trypan Blue Stain	20 mL × 2 bottles Trypan blue stain (0.4 %)
EVEB-960	Erythrosin B Stain	20 mL × 2 bottles Erythrosin B stain (0.05 %)
QC Plate and Beads		
EHGQ-001	EVE HT FL QC Plate Fluorescence	Low level, 1 plate
EHGQ-002	EVE HT FL QC Plate Fluorescence	Middle level, 1 plate
EHGQ-003	EVE HT FL QC Plate Fluorescence	High level, 1 plate
EHBQ-001	EVE HT FL QC Plate Bright	Low level, 1 plate
EHBQ-002	EVE HT FL QC Plate Bright	Middle level, 1 plate
EHBQ-003	EVE HT FL QC Plate Bright	High level, 1 plate
EFB-001	EVE HT FL Test Beads	1 mL x 1 tube
EHB-001	EVE HT BR Test Beads	1 mL x 1 tube
Software		
EVE HT FL 21 CFR Part 11	EVE HT FL 21 CFR Part 11 software	21 CFR Part 11 software

Specifications

Analysis Time	3 - 20 minutes for 48 samples	Loading Sample Volume	20 µL per channel
Measuring Range	Detectable range: $1 \times 10^4 - 2 \times 10^7$ cells/mL Optimal range: $1 \times 10^5 - 1 \times 10^7$ cells/mL	Operation System	Windows 10
		Power	100 - 240V, 50/60Hz
Cell Size Range	Detectable size: 1 - 85 µm (Fluorescence mode) 5 - 85 µm (Brightfield mode) Optimal size: 5 - 80 µm (Fluorescence mode) 10 - 80 µm (Brightfield mode)	Dimensions	586 × 461 × 458 mm (W×D×H)
		Weight	61 kg
		Staining Solution	AO/DAPI mixed solution Trypan blue stain Erythrosin B stain
Channel	Dual fluorescence channels (AO & DAPI) Brightfield channel	21 CFR Part 11 Compliance	Available (Optional)



website | www.nanoentek.com
e-mail | sales@nanoentek.com



FOR RESEARCH USE ONLY.
This product is not approved for diagnostic or therapeutic use.

NanoEntek, Inc.

Head Office
12F, 5, Digital-ro 26-gil, Guro-gu, Seoul, 08389, Korea
Tel +82-2-6220-7940 / Fax +82-2-6220-7999

NanoEntek America, Inc.
220 Bear Hill Road, Suite 102, Waltham, MA 02451, USA
Tel +1-781-472-2558 / Fax +1-781-790-5649

I&L Biosystems Scientific Campus
Mottmannstrasse 2 | 53841 Troisdorf
Germany
www.il-biosystems.com