

SCIPRES II SERIES

Pre-calibrated, NaOH & gamma stable pressure sensor/monitor

The only caustic stable, gamma stable and autoclaveable pre-calibrated, single-use pressure sensor with an on board memory device that stores data of all calibration as well as sensor specific information.

The SciPres II offers plug and play single-use pressure sensing that is scaleable from luer devices to 1" tri-clamp ladish fittings.

Each sensor is pre-programmed with a unique ID for easy traceability with automatically read factory calibration data stored on the sensor's on board chip. This removes the need for individual calibration and, in turn, reduces variation between sensors.

The data can be accessed via the SciDoc software, direct to your PC via the SciPres II monitors or as part of an integrated platform via a DIN card.



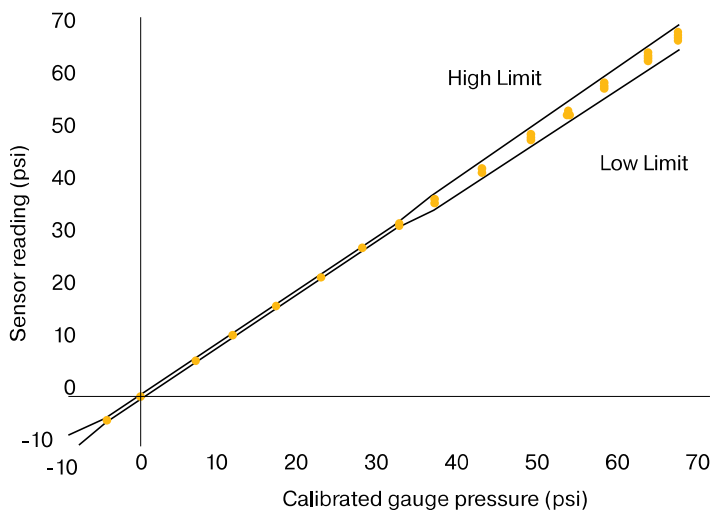
Features & Benefits

- Pre-calibrated
- NIST-traceable
- Certified calibration
- Extended-use sensors (optional)
- Gamma-stable
- NaOH stable
- Autoclave stable
- Comprehensive customer support

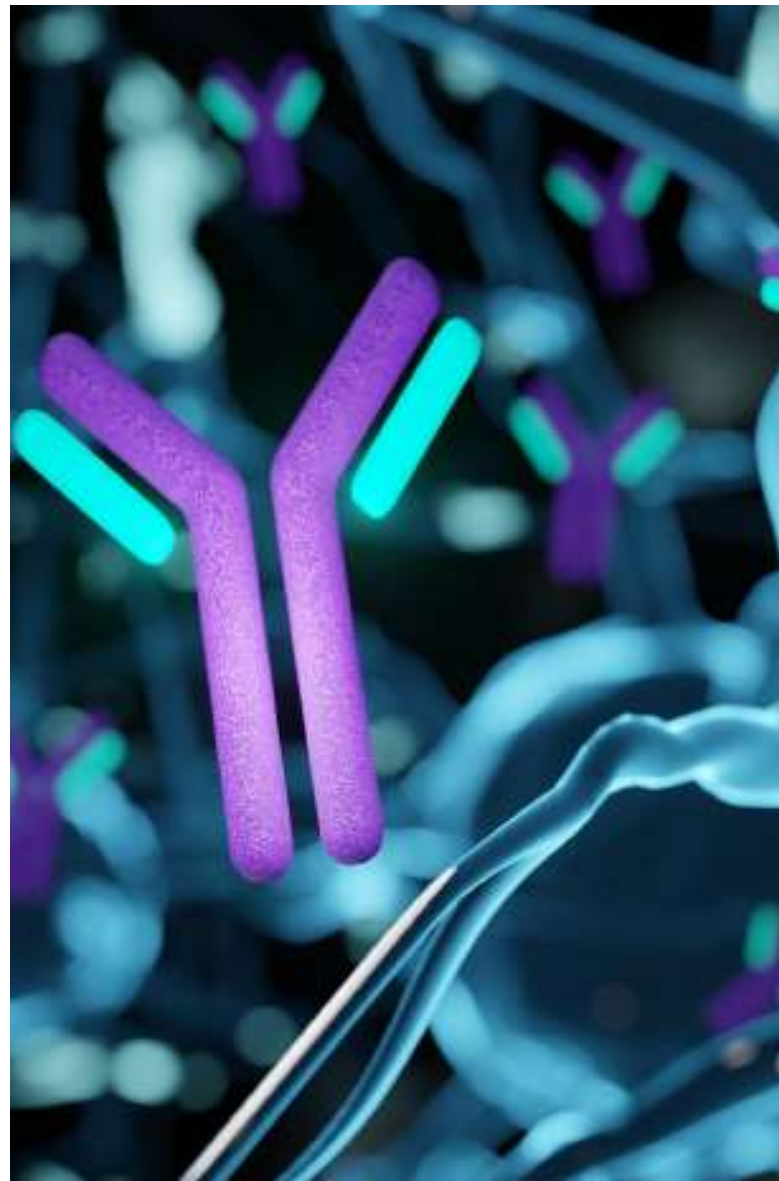
SciPres II Range & Accuracy

Pressure range: -10 to 60 psi*

Pressure accuracy: $\pm 3\%$ from 0psi - 55psi | $\pm 5\%$ from 55psi - 60psi



SciPres II Pressure Sensor Data (60 sensors)



SCIPRES II SERIES

Sensor Specifications

Sterilizability

- Can be sanitized: IPA 70%
NaOH
(0.1N - 1.0N)
- Autoclavable: 1x
- Gamma stable: 25-45 kGy*

Material

Fluid contact materials (polysulfone, <0.1% medical grade silicone dielectric gel, medical grade polycarbonate) meet:

- USP class VI
- FDA 21CFR177.1520
- All wetted materials are made of animal-free compounds

Sensor Type

- Medical grade
- Resistive
- Sensing element with on-chip temperature compensation

Sensor Microchip

- EPROM
- Stored sensor ID and calibration factor

Sensor Connector and Cables

- Dust and water proof IP67



Size, Part Codes and Specifications							
Connector Type	Non-Gamma Irradiated Part Code (Packs of 5)	Gamma -Irradiated Part Code (Packs of 5)	Compatible Tubing Sizes	Max. Flow Rate**			Max. Operating Pressure
				(L / min)	(gpm / psi)	(m ³ / h / bar)	
Luer	206-251	206-251-G	ID 0.03" to 0.31"	1.0	0.26	0.23	60 psi ***
3/8" Barb	206-252	206-252-G	ID 0.31" to 0.38"	8.0	2.11	1.81	60 psi ***
1/2" Barb	206-253	206-253-G	ID 0.50"	17.0	4.49	3.86	60 psi ***
3/4" Tri-Clamp (TC)	206-254	206-254-G	Tubing with 3/4" TC	31.0	8.19	7.03	60 psi
1" Tri-Clamp 'Ladish'	206-255	206-255-G	Tubing with 1" TC Ladish	60.0	15.9	13.6	60 psi

* At minimum dose, sensor accuracy is unaffected. At maximum dose accuracy may be reduced ** Maximum flow rate @ 1 psi *** Ensure connector supports max PSI

Monitor Specifications



	Benchtop Monitor	DINPres II
Part Code	206-200-M	206-200-D
Display	2 Line LCD	4 LEDs (1 per Sensor + Power), Webpage to configure registers
Sensor Readout	P1, P2, P3, dP, TMP	P1, P2, P3
Power Supply	Universal Power Supply, 12VDC, 500mA Barrel Connector	24VDC, 250mA, Phoenix Connector
Alarm Limits	4x TTL outputs for Hi or Lo, Audible Alarms (P1, P2, P3, dP or TMP)	Hi/Lo Modbus Registers
Analog Input	No	No
Analog Output	4-20mA for P1, P2, P3, dP/TMP	No
Serial Connections	RS-232 DB9 or USB-B (Printer Outputs)	RS-232 or RS-485 (Phoenix Connector)
Protocols	N/A	Modbus RTU, Modbus TCP/IP
Included Accessories	Universal power cable, three 6ft cables (CBL-007)	Three 12ft cables (CBL-008), three 12in internal cables (EXPCBL-006)

Replacement Parts	Part Code
Sensor Cable (Sensor to Monitor) - 6 ft	CBL-007
Sensor Cable (Sensor to Monitor) - 12 ft	CBL-008

Parker Hannifin Corporation
Bioscience & Water Filtration Division
 2340 Eastman Avenue
 Oxnard, California 93030 USA
 phone 805 604 3400
 bwf.oxn.support@support.parker.com
 www.parker.com/bioscience

DS_P_SciPres II Rev. 1A 11/2025

© 2025 Parker Hannifin Corporation

Parker has a continuous policy of product development and although the Company reserves the right to change specifications, it attempts to keep customers informed of any alterations. This publication is for general information only and customers are requested to contact your local Parker Bioscience Filtration Sales Representative for detailed information and advice on a products suitability for specific applications. All products are sold subject to the company's Standard conditions of sale.

