

Count with confidence, Count with EVE HT FL!



*EVE*TM HT FL

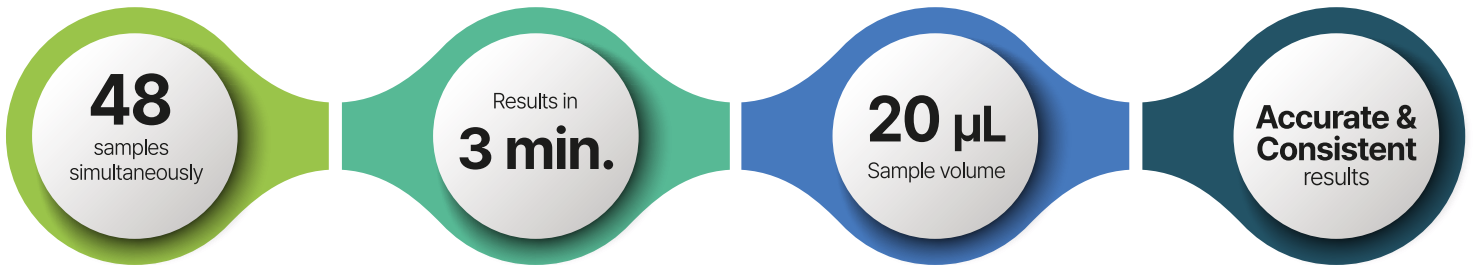
High-throughput **Fluorescence Cell Counter**

- Primary Cells
- PBMCs
- Stem Cells
- Cell Lines

Introduction

EVE™ HT FL is a high-throughput automated fluorescence cell counter equipped with **bright field** and **dual fluorescence channels (AO/DAPI)**. In just **3 minutes**, up to **48 samples** can be counted and analyzed. EVE™ HT FL delivers precise and accurate results, making it the best option for both cell lines and primary cell counting in a variety of applications.

Features

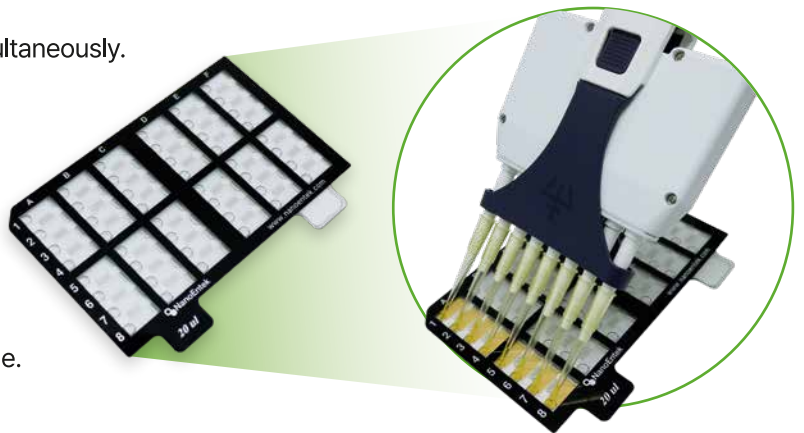


Level Up Your Productivity

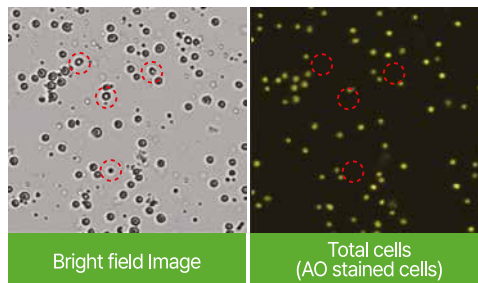
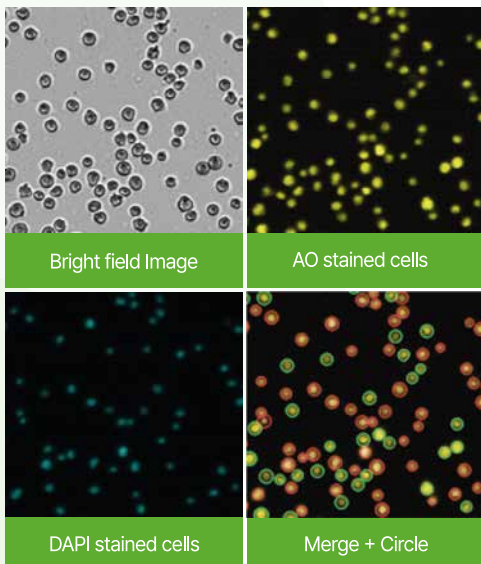
In just **3 minutes**, up to **48 samples** can be counted simultaneously. Don't wait! Count your samples in 3 minutes. Leading to substantial time saving by eliminating the need for frequent reloading and waiting periods.

Small Sample Volume

EVE™ HT FL only needs **20 µL** of your valuable samples. Save your cells for more measurements or better outcome.



Dual fluorescence for accurate measurements of primary cells or PBMCs



Counting PBMCs ONLY!

PBMCs are often mixed with RBCs or platelets. Use EVE HT FL to count only nucleated cells such as PBMCs. Fluorescence based counting is more accurate than traditional Trypan Blue based counting.

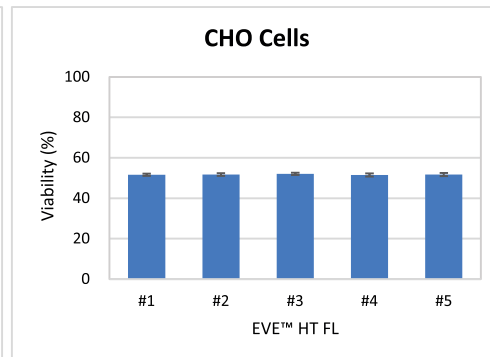
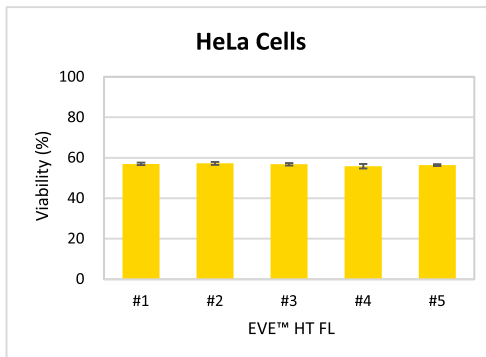
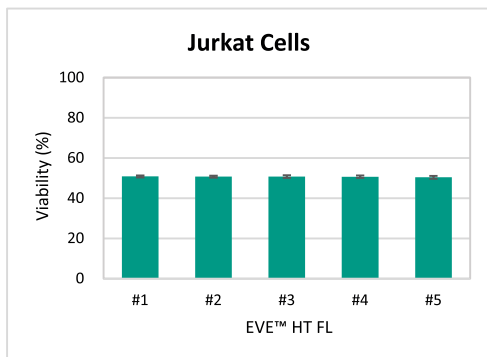
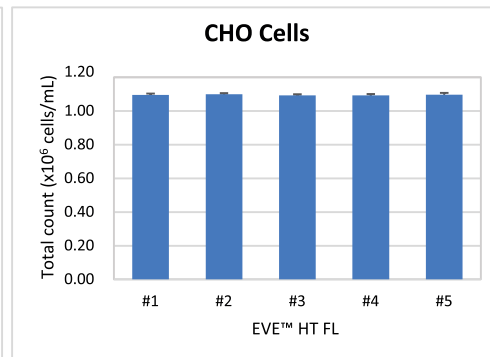
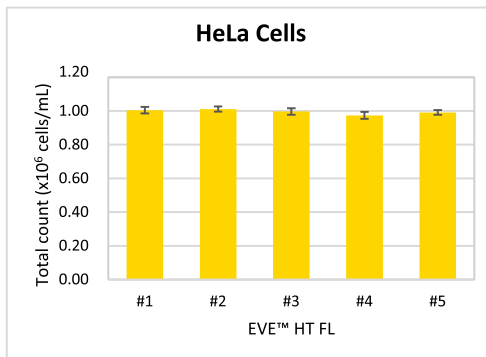
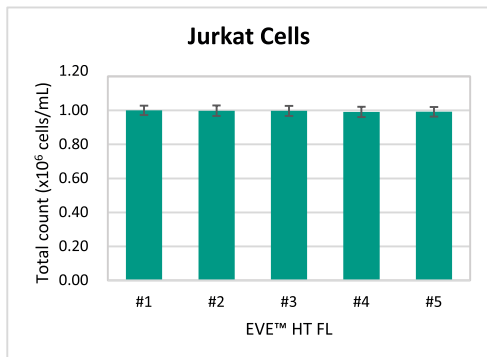
Diverse Cell Counting Applications

- Primary Cells
- PBMCs
- Cell Lines
- Stem Cells
- Hepatocytes
- Leukocytes
- Splenocytes
- Adipocytes

Accurate and Precise Results

Instrument-to-instrument Variability with Cell Lines

5 EVE™ HT FL instruments were put to the test using three different cell line samples (Jurkat, HeLa, and CHO) to compare their differences. The results below show very low instrument-to-instrument variability.

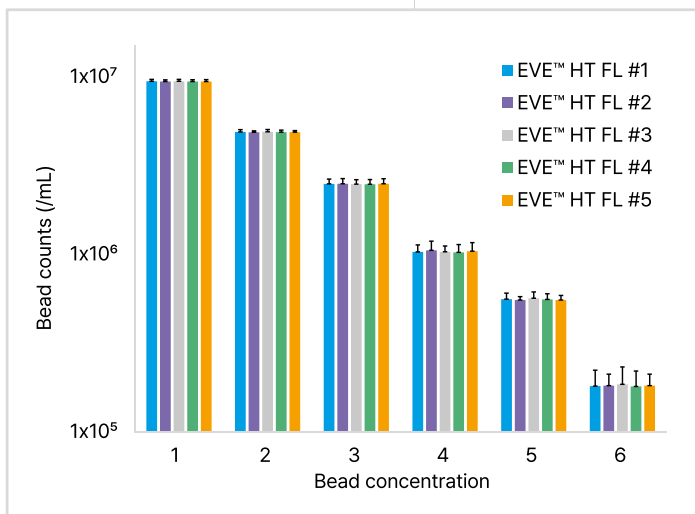


Cell Line	Instrument to instrument (CV)	Plate to plate (CV)	Whole result (CV)
Jurkat	0.44%	2.77%	5.70%
HeLa	1.14%	1.45%	5.29%
CHO	0.24%	0.58%	5.33%
	Viability (CV)	Viability (CV)	Viability (CV)
	0.21%	0.99%	4.38%
	0.91%	0.85%	3.73%
	0.37%	1.07%	4.28%

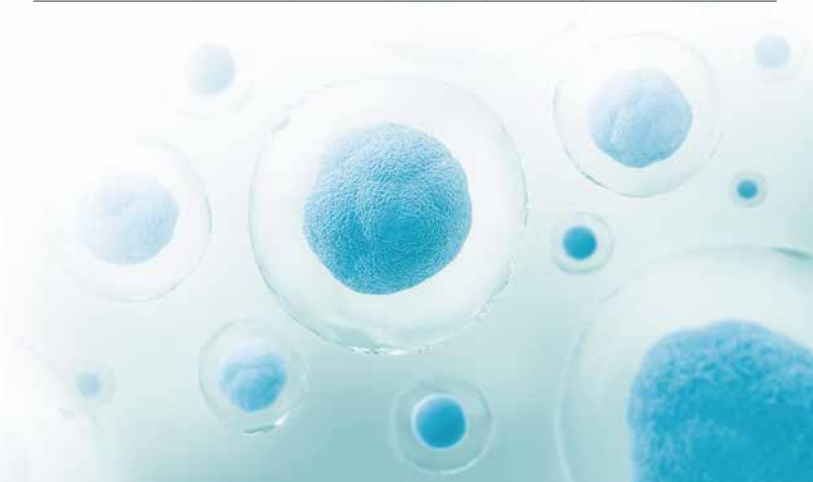
*Whole result: CV value was calculated by combining a total of 400 results measured 16 times each on 5 instruments and 5 plates.

Instrument-to-instrument Variability with Beads

5 EVE™ HT FL were used to measure fluorescent reference beads (for AO channel) at 6 different concentrations. The results below show very little instrument-to-instrument variability.

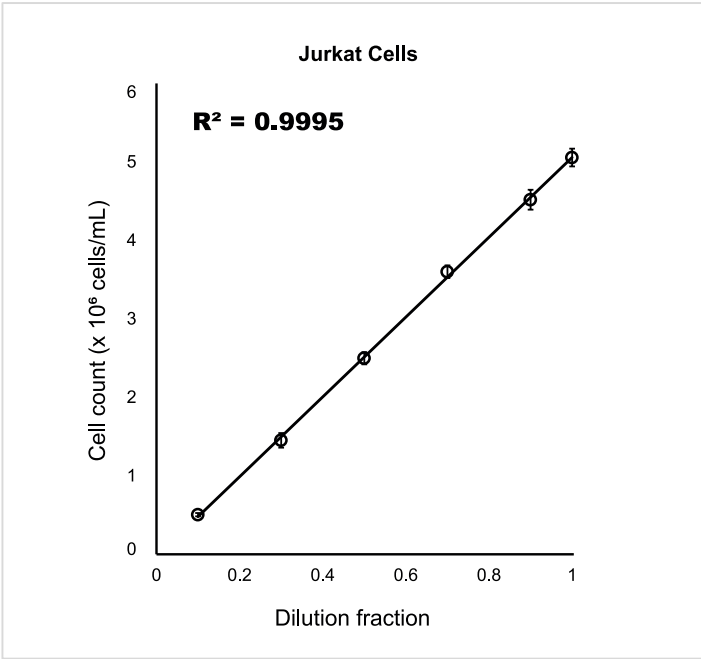
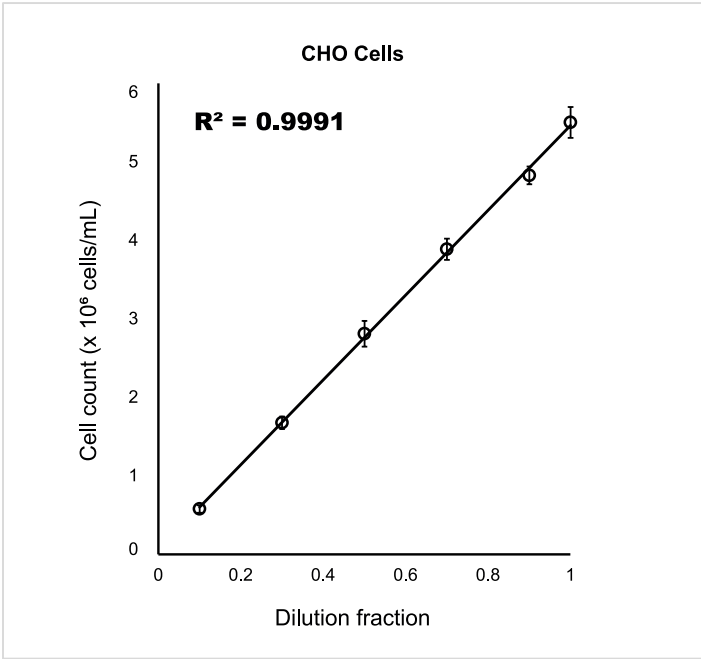


	Bead 1	Bead 2	Bead 3	Bead 4	Bead 5	Bead 6
Instrument to instrument (CV)	0.17 %	0.28 %	0.28 %	1.02 %	0.98 %	1.04 %



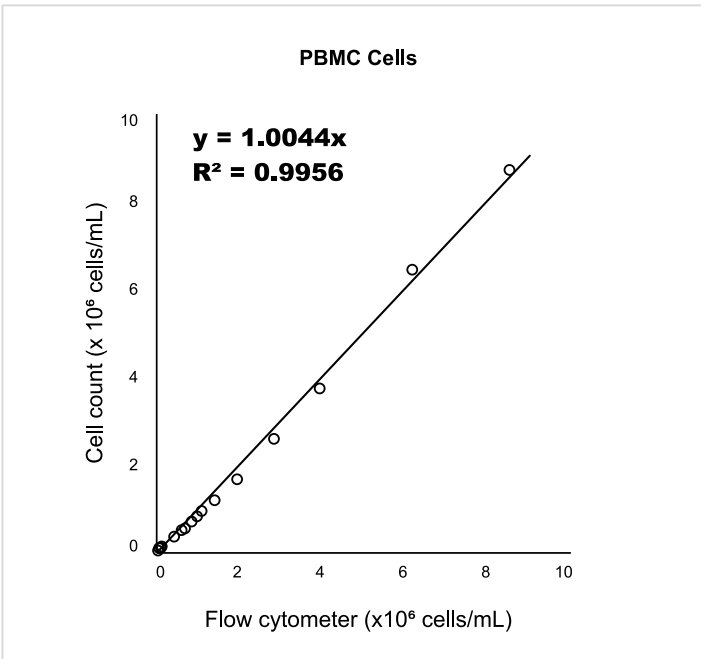
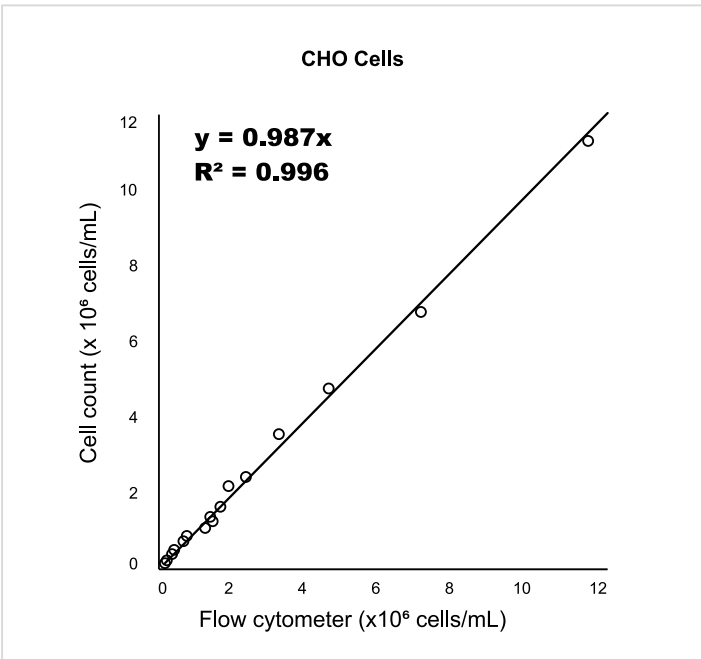
Excellent Linearity Across Wide Range

Following ISO standard for cell counting, we evaluated linearity of EVE™ HT FL using 2 cell lines (CHO cells and Jurkat cells). The following results demonstrate outstanding linearity.



High Correlation Between EVE™ HT FL and a Flow Cytometer

Cell samples were measured using EVE™ HT FL and a flow cytometer. For both CHO cells and PBMCs, total cell counts measured by EVE™ HT FL were highly correlated with those measured by a flow cytometer.



21 CFR Part 11 Compliance READY

EVE™ HT FL is ready for 21 CFR part 11 compliance for cGMP facilities.

Electronic Records

Audit Trails

Electronic Signatures

User Management

Audit Trail

Date Time	User	Log
2023-08-18 02:58:57 PM	admin	31024 Change the information in the [E]Home of the channel [002] of the project [202018 AC] [level] [L200] -H
2023-08-18 02:59:45 PM	admin	31025 The user creates a new project [202018 AC] [level] [L200] -H
2023-08-18 02:59:45 PM	admin	31026 The user starts the project [202018 AC] [level] [L200] -H
2023-08-18 02:59:54 PM	admin	31027 Released Counting Process Complete
2023-08-18 02:59:57 PM	admin	31028 The user creates a new project [202018 AC] [level] [L200] -H
2023-08-18 02:59:57 PM	admin	31029 The user starts the project [202018 AC] [level] [L200] -H
2023-08-18 02:59:57 PM	admin	31030 Released Counting Process Complete
2023-08-18 02:59:57 PM	admin	31031 A user deletes the counting data [202018 AC] [level] [L200] -H
2023-08-18 02:59:57 PM	admin	31032 A user deletes the counting data [202018 AC] [level] [L200] -H
2023-08-18 02:59:59 PM	admin	31033 Change the information in the [E]Home of the channel [002] of the project [202018 AC] [level] [L200] -H
2023-08-18 02:59:59 PM	admin	31034 Change the information in the [E]Home of the channel [002] of the project [202018 AC] [level] [L200] -H
2023-08-18 02:59:59 PM	admin	31035 Change the information in the [E]Home of the channel [002] of the project [202018 AC] [level] [L200] -H
2023-08-18 02:59:59 PM	admin	31036 Change the information in the [E]Home of the channel [002] of the project [202018 AC] [level] [L200] -H
2023-08-18 02:59:59 PM	admin	31037 System Software is installing
2023-08-18 02:59:59 PM	admin	31038 A user [admin] attempts to log in
2023-08-18 02:59:59 PM	admin	31039 A user [admin] logs in successfully
2023-08-18 02:59:59 PM	admin	31040 The user creates a new project [202018 AC] [level] [L200] -H
2023-08-18 02:59:59 PM	admin	31041 The user starts the project [202018 AC] [level] [L200] -H
2023-08-18 04:00:58 PM	admin	31042 Released Counting Process Complete
2023-08-18 04:00:58 PM	admin	31043 A user deletes the counting data [202018 AC] [level] [L200] -H
2023-08-18 04:00:58 PM	admin	31044 The user creates a new project [202018 AC] [level] [L200] -H
2023-08-18 04:00:58 PM	admin	31045 The user starts the project [202018 AC] [level] [L200] -H
2023-08-18 04:00:58 PM	admin	31046 Released Counting Process Complete

Electronic Signatures

Digital signature

Signature

Clear signature

Registration

User Name	Access Level	Delete	Lock
admin	Admin	X	
user1	User	X	
test1	User	X	
super1	Supervisor	X	

User Management

Data Analysis Report

Results can be easily saved as a PDF report and your data can be easily shared with anyone. Also, more detailed results and raw images can be exported in CSV and JPG files to help you run more extensive data analysis or prepare presentations.

EVE™ HT FL Test report

Sign. Signature

Export user: admin_nano

Export date: 2023-08-14 10:47:45

Project name: 230803 wellbot 2nd CHD

Project type: Cell

Date & time: 2023/08/03 14:58:25

Path: 2023_08/03_145825

Solution Lot No: EVEHTF1

Solution Type: ACDAP1

Solution Exp. Date: 2024-06-15

User Name: admin_authenticate

Accuracy mode: CR

Real cell size: CRF

Size Graph

Total Count Graph

Live Count Graph

Dead Count Graph

Viability

Circle On

Circle Off

Customizable Setting for Cell Counting

Users can customize image analysis parameters which can be saved and easily imported for next measurements. This feature allows users to find best sets of parameters that help identify only those cells of their interest and minimize the effects of non-cell debris or unwanted subtypes of cells.

Channel BRIGHT AO DAPI

Tolerance 25

Smooth level 1

Cell intensity level 25 ~ 255

Size range (µm) 3 ~ 50

Set parameters for each channel



Scan me

Ordering Information

No.	Cat. No	Product	Contents
1	EVE HT FL	High-throughput fluorescence cell counter	Main device 1 ea Desktop & monitor 1 set Multi pipette 1 ea
2	EVFL-020	EVE HT FL Counting kit	960 tests / kit Counting plates (48 channels × 20 ea) Mixing well plates (96 wells × 10 ea) Reservoirs (5 pcs × 4 packs)
3	EVAD-960	AO/DAPI Staining solution	Acridine orange (AO) & 4',6-diamidino-2-phenylindole (DAPI) stain 20 mL x 2 bottles
4	EHGQ-001	EVE HT FL QC Plate (optional)	Low level, 1 pc
5	EHGQ-002	EVE HT FL QC Plate (optional)	Middle level, 1 pc
6	EHGQ-003	EVE HT FL QC Plate (optional)	High level, 1 pc
7	EHPP-001	Preparation plate (optional)	Preparation plate
8	EVE HT FL 21 CFR Part 11	EVE HT FL 21 CFR Part 11 software (optional)	21 CFR Part 11 software

Specifications

Analysis Time	3 ~ 18 minutes for 48 samples	Operation System	Windows 10
Measuring Range	Detectable range: $1 \times 10^4 \sim 2 \times 10^7$ cells/mL Optimal range: $1 \times 10^5 \sim 1 \times 10^7$ cells/mL	Power	100 ~ 240V, 50/60Hz
Cell Size Range	Detectable size: 5 ~ 85 μ m Optimal size: 5 ~ 80 μ m	Dimensions	586 × 461 × 458 mm (W×D×H)
Channel	Dual fluorescence channels (AO & DAPI)	Weight	61 kg
Loading Sample Volume	20 μ L per channel	Staining Solution	AO/DAPI mixed solution (EVAD-960)
		21 CFR Part 11 Compliance	Available (Optional)

NanoEntek, Inc.

Head Office

12F, 5, Digital-ro 26-gil, Guro-gu, Seoul, 08389, Korea
Tel: +82-2-6220-7940 / Fax: +82-2-6220-7999

NanoEntek America, Inc.

220 Bear Hill Road, Suite 102, Waltham, MA 02451, USA
Tel: +1-781-472-2558 / Fax: +1-781-790-5649

[website](#) www.nanoentek.com

[e-mail](#) sales@nanoentek.com

[Blog](#) www.blog-nanoentek.com