



OsmoTECH® PRO

Multi-Sample Micro-Osmometer

Because an optimized bioprocess
is non-negotiable.

Designed to meet your most complex bioprocessing needs

We recognize that biopharmaceutical manufacturing involves many complex operational steps. Ensuring that the entire manufacturing process consistently produces a biopharmaceutical product of predetermined yield, purity, and quality is of the utmost importance.

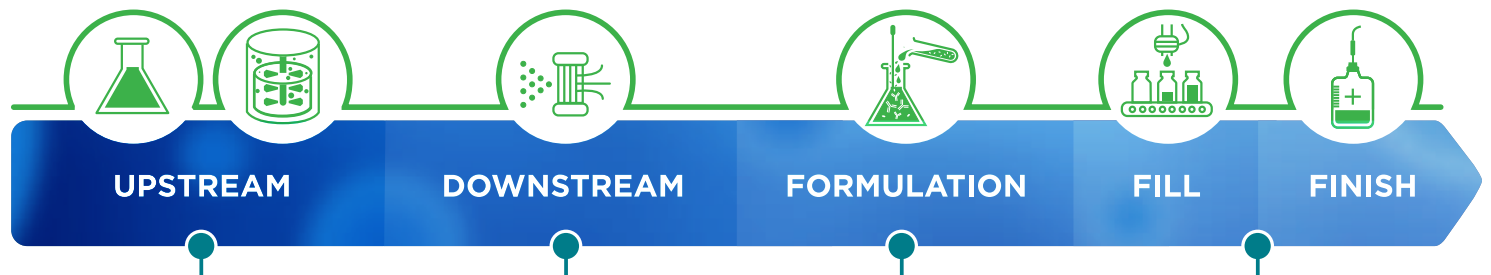
Leveraging our expertise in osmolality testing, Advanced Instruments has developed a portfolio of osmometers to suit the unique needs of the biotech industry.

Optimize your bioprocess with OsmoTECH PRO.

The OsmoTECH PRO osmometer is an accurate, precise, and easy to use instrument that incorporates freezing point depression technology to test osmolality - an essential parameter for process control and QC. In a class of its own, OsmoTECH PRO is enhanced with advanced data management options and can integrate seamlessly into your high throughput workflow.



Osmolality testing is an in-process control and quality-check used throughout the development and manufacture of biologics.



- Guarantee quality, potency and consistency during media development and raw material management.
- Monitor cell culture and fermentation to ensure optimal cell health, and consequently, high product quality and yield.

Ensure precise buffer preparation and prove complete buffer exchange to improve purification efficiency.

Safeguard your biologic as it passes through storage, reconstitution and injection.

Ensure that the final product meets your quality standards and release criteria.

Compliance with Quality Assurance demands

Surpassing all expectations—the OsmoTECH PRO is built to exceed your most demanding needs. It is perfectly suited for mid to high throughput areas across the bioprocessing value chain, thus streamlining efficiency and allowing customers more time to focus on other areas of work. It also helps support compliance within 21 CFR Part 11 and EU Annex 11 with robust data security features that can be easily adapted for your organization's unique structure.

OsmoTECH PRO meets osmolality testing guidelines in the biopharmaceutical industry to control the quality of medicines and the materials used to manufacture them as described by the organizations below:

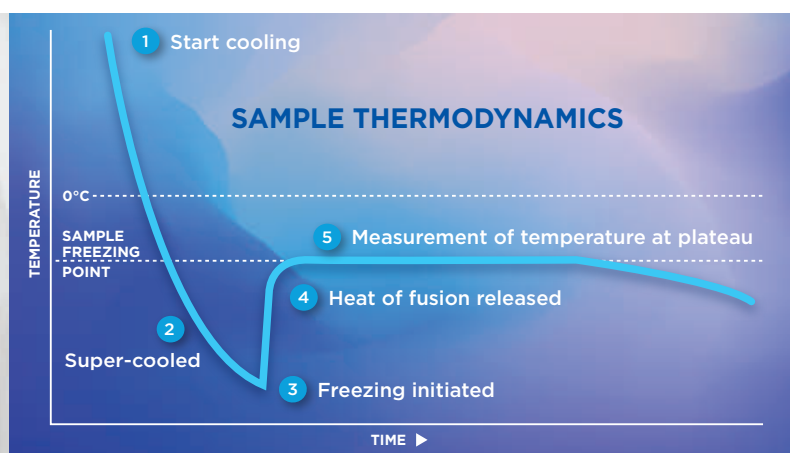
- European Pharmacopeia
- United States Pharmacopeia
- Japanese Pharmacopeia
- Chinese Pharmacopeia

Delivers accurate and precise results

The OsmoTECH PRO utilizes freezing point depression—the gold standard method of testing osmolality. Freezing point depression is preferred by biotechnology labs worldwide because it assures:

- Fast 90-second test time and accurate measurements
- Consistently reliable results using a small sample requirement (30 μ L)
- Compatibility with virtually any liquid matrix
- Full characterization of concentration, including volatiles, such as alcohol

Only freezing point osmolality is a truly comprehensive measurement of samples, as it is independent of the size, ionization status, shape and other physical characteristics of the liquid solutions it measures.



Evolves with your data management needs

OsmoTECH PRO's new and innovative features let you customize testing and data reporting to best fit your workflow and existing structure.

You can:

- Choose from configurable data settings to match your needs as they evolve during R&D, preclinical research, clinical testing and GMP compliance
- Explore several options for data management and connectivity. You can fully integrate data into a centralized system; turn off data connectivity and storage if your process is paper-based; or choose any extent in between

Experience unrivaled user friendliness

OsmoTECH PRO guarantees you a simple and fluid experience:

- Interactive and intuitive touch screen with multi-language capacity
- Arrives factory-calibrated, with no need for routine calibration
- Short start-up time; start testing quickly
- 20-position turntable for easy sample loading and walkaway testing
- Color-coding with on-screen messages to let you know the instrument's status

Built for Biotech



User-friendly interface

The menu-driven operating system, multi-language capability and touchscreen graphical user interface all make for easy operation

Run multiple samples effortlessly

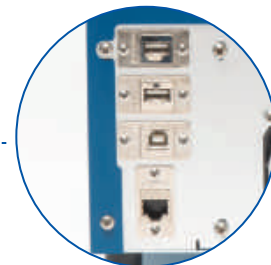
Its 20-position turntable allows for walkaway testing

Small sample requirement

Just a 30 μ L sample volume is needed for sample-limited applications

Maintain traceability

The integrated barcode scanner helps with sample identification and reduces transcription errors



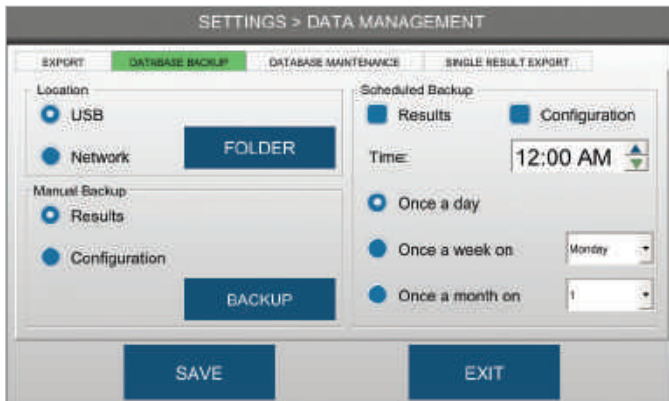
Manage and export data with ease

Several ways, including Open Protocol Communication (OPC), USB download, Network share, LIS (TCP/IP communication), or an Optional printer

Support compliance. Streamline workflow.

The most data management features of any osmometer on the market

Security features support 21 CFR Part 11 and EU Annex 11 Compliance



- **Three levels of user access:** Set up to reflect the hierarchy of your team
- **Active directory/LDAP:** Align with your IT network to minimize manual input
- **Password protection:** Configurable password to match internal security requirements
- **Pre-expire passwords:** Force password change on first login to ensure maximum security
- **Automatic logout timer:** Keep your data safe during idling
- **Audit trail:** Preserve unlimited results and events
- **Change management:** Require reason for changing settings

Flexible data management options to fit your workflow



- **OPC-UA:** Easily integrate your results into a data management system and batch records
- **PDF or CSV export:** Quickly save data to network folder or USB
- **Database backup:** Protect your data with automatic or manual backups
- **Network time synchronization:** Eliminate the need to manually manage date and time
- **Embedded web server:** Remotely view and manage data for additional walkaway time
- **Results database on/off:** Decide whether results are stored on the system
- **LIMS/LIS:** Effortlessly connects for sample and data tracking
- **Dot matrix printer (optional):** Prevents records from fading

Parts and supplies

Part number	Product description
Instrument	
OsmoTECH PRO	Multi-Sample Micro-Osmometer

Calibration standards, reference solutions and testing supplies

SK-TECHPRO	<p>Convenience Kit includes:</p> <ul style="list-style-type: none"> • Micro-Sample Tubes; disposable, Pkg 500 (222825) • Calibration Standard; 50 mOsm - 2mL Ampule, Pkg 10 (3MA005) • Reference Solution; Clinitol 290 - 2mL Ampule, Pkg 10 (3MA029) • Calibration Standard; 850 mOsm - 2mL Ampule, Pkg 10 (3MA085) • Calibration Standard; 2000 mOsm - 2mL Ampule, Pkg 10 (3MA200) • Osmolality Linearity Set; 5-Level, 5mL Ampule, Pkg 10 (3LA028) • Probe Wiper Rings; 20-position, Pkg 50 (222840) • Tips, Pipette; Pkg 50 (240821) • Swab Cleaner Kit; Pkg 50 (202850)
------------	--

1. Subject to change
2. Accuracy and within-run repeatability specifications apply to Advanced Instruments standards and reference solutions. Performance at reference conditions: 20°C to 25°C (68°F to 77°F); 40 to 60% relative humidity.
3. Operating Conditions: Temperature 18°C to 35°C (64°F to 95°F); 5 to 80% relative humidity (non-condensing).

Specifications¹

Sample type	Aqueous-based solution
Sample volume	30 ± 1 µL
Test time	90 seconds (typical) to test single sample 40 minutes (typical) to test 20 samples
Sample capacity	Multi sample
Resolution	1 mOsm/kg H ₂ O
Range	0-2000 mOsm/kg H ₂ O
Accuracy²	0-400 mOsm/kg H ₂ O: mean value ± 3 mOsm/kg H ₂ O from nominal value (1 SD) 400-2000 mOsm/kg H ₂ O: mean value ± 0.75% from nominal value (1 SD)
Within-run repeatability²	0-400 mOsm/kg H ₂ O: standard deviation ≤ 3 mOsm/kg H ₂ O from nominal value 400-2000 mOsm/kg H ₂ O: Coefficient of Variation ≤ 0.75%
Temperature effects³	Less than 1 mOsm/kg H ₂ O per 5°C (9°F) ambient temperature change
Supported languages	Simple Chinese, English, French, German, Italian, Japanese, Korean, Russian, Spanish, Turkish
Storage temperature	-20°C to +45°C (-4°F to +113°F)
Electrical voltage	100 to 240 VAC (50/60 Hz)
Power consumption	60 Watts
Dimensions (D x W x H)	39 cm x 25 cm x 46 cm (15.3" x 10" x 18")
Net weight	13.2 kg (29 lbs.)
Shipping weight	17.7 kg (39 lbs.)
Warranty	One-year limited warranty on workmanship and parts



Optimal performance requires quality test supplies.

Advanced Instruments provides a full line of calibration standards and consumables. These supplies ensure optimal system performance and accurate test results.



Two Technology Way /781-320-9000
Norwood, Massachusetts 02062, USA
800-225-4034 Fax: 781-320-8181
aicompanies.com

Not for patient diagnostic use



Advanced Instruments certifies that the technical features needed for 21 CFR Part 11 and EU Annex 11 compliance are built into OsmoTECH PRO. It is your responsibility to implement the necessary controls in your laboratory to comply with 21 CFR Part 11 and EU Annex 11 requirements.

© 2019 Advanced Instruments. OsmoTECH, Clinitol, and Protinol are trademarks of Advanced Instruments. All other trademarks are the property of their respective companies.

MP00072 Rev2 PCN01074

Request a quote or demo: aicompanies.com/OsmoTECHPRO-quote